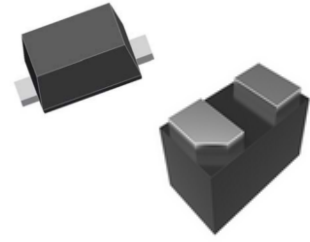


FEATURES 特点

- Designed to protect voltage sensitive components from ESD.
产品设计基于保护压敏原件免受静电放电伤害。
- Small size & Excellent clamping capability.
小尺寸&卓越的钳位抑制能力。
- Fast response time provide best in class protection on designs that are exposed to ESD.
快速的响应时间进行 ESD 保护。



APPLICATIONS 应用

- Suited for use in cellular phones, digital cameras, notebooks, handhelds etc. .
适用于手机, 数码相机, 笔记本电脑, 平板电脑, 等..

Product Identification 产品标识

MNE- 9D 5V L
① ② ③ ④

- ① Series name 系列名称
② 1Z-SOD123, 3Z-SOD323, 5Z-SOD523, 7Z-SOD723, 9D-SOD923,
DF21-DFN0201, DF42-DFN0402,
FBP-WFBP-02C
③ 5V-5V Uni-direction 12C-12V Bi- direction
④ L-Low capacitance H-High capacitance

Electrical Characteristics 电气性能

Part No.	Electrical Specifications @25°C							Package
	V _{RWM} (V)	V _{BR} (V)	I _R (μA)	Cap (pF)	V _C (V)	I _{PP} (A)	P _{PK} (W)	
		Min	Max	Max	Max	Max	Max	
MNEDF213V3C	3.3	3.8	1	9	-	4	-	DFN0603
MNEDF215C	5	5.6	0.5	5	-	-	-	DFN0603
MNEDF215CL	5	5.4	0.5	0.5	12	-	-	DFN0603
MNEDF215CNL	5	5.5	0.1	3.5	-	3.5	-	DFN0603
MNEDF423V3C	3.3	5	1	25	14	11	150	DFN1006
MNEDF423V3	3.3	5	1	80	12	8	100	DFN1006
MNEDF423V3CL	3.3	4.8	1	0.5	10	-	-	DFN1006
MNEDF423V3L	3.3	4.8	1	0.5	12	-	-	DFN1006
MNEDF425C	5	5.6	0.5	15	18	9	170	DFN1006

Electrical Characteristics 电气性能

Part No.	Electrical Specifications @25°C							
	V _{RWM} (V)	V _{BR} (V)	I _R (μ A)	Cap (pF)	V _C (V)	I _{PP} (A)	P _{PK} (W)	Package
		Min	Max	Max	Max	Max	Max	
MNEFBP5C	5	5.6	0.5	15	18	9	170	WFBFP-02C
MNEDF425VH	5	6.2	1	65	12	8	100	DFN1006
MNEDF425V	5	5.8	1	25	10	-	-	DFN1006
MNEBP5V	5	5.8	1	25	10	-	-	WFBFP-02C
MNEDF425C-2	5	5.4	0.5	7	10	-	-	DFN1006-3L
MNEDF4212V	12	13.5	0.5	40	20	-	-	DFN1006
MNE9D3V3C	3.3	5	1	25	14	11	150	SOD-923
MNE9D3V3	3.3	5	1	80	12	8	100	SOD-923
MNE9D3V3CL	3.3	4.8	1	0.5	10	-	-	SOD-923
MNE9D3V3L	3.3	4.8	1	0.5	12	-	-	SOD-923
MNE9D5C	5	5.6	0.5	15	18	9	170	SOD-923
MNE9D5V	5	6.2	0.5	65	12	8	100	SOD-923
MNE9D5CL	5	5.4	0.5	0.5	12	-	-	SOD-923
MNE9D5VL	5	5.4	0.5	0.5	10	-	-	SOD-923
MNE8D5C	5	5.6	0.5	15	18	9	170	SOD-882
MNE8D5V	5	6.2	0.5	65	12	8	100	SOD-882
MNE8D5CL	5	5.4	0.5	0.5	12	-	-	SOD-882
MNE8D5VL	5	5.4	0.5	0.5	10	-	-	SOD-882
MNE7Z3V3	3.3	5	1	80	12	8	100	SOD-723
MNE7Z5V	5	6.2	0.5	65	12	8	100	SOD-723
MNE5Z2V5	2.5	4	5	145	10	11	200	SOD-523
MNE5Z3V3C	3.3	5	1	15	75	-	-	SOD-523
MNE5Z3V3	3.3	5	1	100	14	11	200	SOD-523
MNE5Z3V3L	3.3	5	1	0.5	10	-	-	SOD-523
MNE5Z5C	5	5.6	0.5	15	18	9	170	SOD-523

Electrical Characteristics 电气性能

Part No.	Electrical Specifications @25°C							Package
	V _{RWM} (V)	V _{BR} (V)	I _R (μA)	Cap (pF)	V _C (V)	I _{PP} (A)	P _{PK} (W)	
		Min	Max	Max	Max	Max	Max	
MNE5Z5V	5	5.6	0.5	80	18	9	200	SOD-523
MNE5Z5CL	5	5.4	0.5	0.5	12	-	-	SOD-523
MNE5Z5VL	5	5.4	0.5	0.5	10	-	-	SOD-523
MNE5Z6V	6	6.8	1	70	20	8	200	SOD-523
MNE5Z7V	7	7.6	1	65	22	8	200	SOD-523
MNE5Z12V	12	13.5	0.5	55	25	9	200	SOD-523
MNE5Z24V	24	25	0.5	50	-	-	300	SOD-523
MNE5Z36V	36	40	0.5	60	60	2	300	SOD-523
MNE3Z3V3	3.3	5	1	100	14	11	200	SOD-323
MNE3Z5C	5	5.6	0.5	15	18	9	170	SOD-323
MNE3Z5V	5	6	1	350	10	5	350	SOD-323
MNE3Z12V	12	13.3	0.5	150	25	15	350	SOD-323
MNESD05	5	6	1	350	14	24	350	SOD-323
MNESOT03C	3.3	4	20	400	7	18	300	SOT-023
MNESOT03V	3.3	4	20	400	7	18	300	SOT-023
MNESOT05C	5	6	1	220	10	17	300	SOT-023
MNESOT05V	5	6	1	220	10	17	300	SOT-023
MNESOT08C	8	8.5	1	190	13	15	300	SOT-023
MNESOT08V	8	8.5	1	190	13	15	300	SOT-023
MNESOT12C	12	13.3	1	90	19	12	300	SOT-023
MNESOT12V	12	13.3	1	90	19	12	300	SOT-023
MNESOT15C	15	16.7	0.5	60	24	10	300	SOT-023
MNESOT15V	15	16.7	0.5	60	24	10	300	SOT-023
MNESOT24C	24	26.7	0.5	63	43	5	300	SOT-023
MNESOT24V	24	26.7	0.5	63	43	5	300	SOT-023

注：本 PDF 文件只提供了产品主要资料, 因此在您希望订购或详细了解产品相关资料时, 请及时联系麦捷科技以获得最新、最全的产品资料。

Electrical Characteristics 电气性能

Part No.	Electrical Specifications @25°C							
	V _{RWM} (V)	V _{BR} (V)	I _R (μA)	Cap (pF)	V _C (V)	I _{PP} (A)	P _{PK} (W)	Package
		Min	Max	Max	Max	Max	Max	
MNESOT36C	36	40	0.5	60	60	2	300	SOT-23
MNESOT36V	36	40	0.5	60	60	2	300	SOT-23
MNESM712	7/12	8/14	0.5	60	-	-	-	SOT-23
MNESR3.3	3.3	3.5	1	6	15	10	150	SOT-143
MNESR05	5	6	5	6	20	25	500	SOT-143
MNE3V3W5	3.3	4.5	1	30	-	-	-	SOT-563
MNE5VW6	5	6.4	0.5	15	10	2.5	25	SOT-363
MNE6V1W6	5	6.1	0.5	50	-	-	100	SOT-353
MNE6V1W5	5	6.1	1	90	-	-	150	SOT-353
MNE6V8W5	5	6.4	0.5	12	13	16	20	DFN2510
MNEDF0524	5	6.4	0.5	0.35	10	4	150	DFN1616
MNEDF0504	5	6	3	2	18	6	150	DFN1616
MNESOT0504S	5	6	3	2	18	6	150	SOD-323-6
MNESRV05-4	5	6	1	3	28	5	350	SOT-023-6
MNESLVU2.8	2.8	3	1	3	13	20	500	SOT-023
MNESLVU2.8-4	2.8	3	1	3	13	20	500	SOP-08
MNESLVU2.8-8	2.8	3	1	3	13	20	500	SOP-08
MNELC03-3.3	3.3	3.5	1	16	-	-	2000	SOP-08
MNELC03-6	6	6.5	1	16	-	-	2000	SOP-08
MNEDF165VH	5	6	1	-	15	80	1200	DFN1610